

CHRIST LUTHERAN CHURCH  
917 EVERGREEN AVENUE  
PITTSBURGH, PA 15209

ADDRESS SERVICE REQUESTED

In the Neighborhood for GOOD

NON-PROFIT ORG.  
US POSTAGE PAID  
PERMIT NO. 355  
PITTSBURGH, PA.

# JANUARY 2019 NEWSLETTER

In the Year of Our Lord 2019 - Vol. 9, Issue 1

*From Our  
Pastor's Desk*

## DREAM BIG AND BELIEVE BIGGER STILL

*With a survival mentality*, congregations have few dreams and little faith in the future. They cut programs and budgets, say no to anything but the bare necessities, and don't seem to notice as some members become increasingly negative and others slip away. The first to go are usually families with young children, drawn to congregations with exciting Sunday Schools and youth programs.

*With a thriving mentality*, congregations dream big and believe bigger still. *continued on next page . . .*



The first 3 words of this Credo help us to fulfill the 4th, and in Serving, we fill our hearts with Christ and His Great Commission to spread His teachings to humanity. What a Mission! When you Welcome, let another see Christ in your eyes, your smile, your handshake or hug, and your help. Matthew 28:16-20



COVER

In the Year of Our Lord 2019  
Vol. 9, Issue 1  
INSIDE:

|  |          |
|--|----------|
| "Dream Big and Believe Bigger Still" by Pastor Scott | PP 1-2   |
| Nursery, Sermons                                     | P 3      |
| "A Beautiful Gift and It Sounds Beautiful Too"       |          |
| by Pastor Scott                                      | P 3      |
| "The End of My Bloomington Trips" by Pastor Scott    | P 4      |
| "We Welcome Aaron Jackson On Staff (Again)"          |          |
| by Pastor Scott                                      | PP 4-5   |
| The Lord's Prayer                                    | P 5      |
| New Council Officers                                 | P 5      |
| Baptismal Birthdays                                  | P 5      |
| New Council Officers                                 | P 5      |
| The Neighborhood Table                               | P 6      |
| "Traits of Healthy and Growing Churches"             |          |
| by Pastor Scott                                      | PP 7-8   |
| Faith & Family Café:                                 |          |
| Beer, Brats and Baptism                              | PP 8-9   |
| Christ Continued, Something for Everyone at CLC      | P 10     |
| Our Church Grows                                     | PP 10-11 |
| Communion to Shut-Ins, Visitation Ministry           | P 11     |
| Thank-You's  | PP 12-13 |
| Pastor Away  | P 13     |
| Worship at CLC                                       | P 13     |
| "Tikkun Olam"  |          |
| by Bishop Kusserow                                   | PP 12-13 |
| Eternal Life   | P 14     |
| New CLC Website,                                     |          |
| Lutheran Adult Studies                               | P 14     |
| January Birthdays                                    | P 15     |
| High School Sunday School                            | P 15     |
| Memorials  | Insert   |
| January Calendar                                     | Insert   |
| Attributions, Staff                                  | Insert   |
| Church Information                                   | Insert   |
| CLC St. AfterSchool                                  | Insert   |

**Your Church Family:** is a great resource for year-end giving. Please consider Christ Lutheran as an option, it makes a difference in the lives of many!

They add programs and increase budgets, say yes to trying to make things happen, and notice when these decisions create a positive spirit and attract new members. And, new members bring new talents to a congregation and new ideas for ministries.

Congregations on the move take risks. Faithful congregations trust that the future is in God's hands and do not shrink back from trying new ministries even if they don't always succeed. Growing congregations say "Yes!"

We're going to need a lot of "Yeses!" in 2019 if we are going to continue to move CLC into a bright future.

**There's so much that needs to be done.**

**But we can do it!**

***DREAM BIG . . .  
AND BELIEVE BIGGER STILL***



## A BEAUTIFUL GIFT AND IT SOUNDS BEAUTIFUL, TOO

Bill Glesner, a piano tuner, is a good friend of our Director of Music and Liturgy, Ed Kapsha. Bill looks for choice pianos he can offer to select clientele. And Bill loves to place great pianos in great churches.

Bill found a one-owner Kawai baby grand in top shape and spread the word.

Well, I was told about the piano, but I felt the price was too high for us to even think about. And then Bill came down in the price. As Christmas was approaching, the price dropped again.

"What the heck," I thought, "it can't hurt to make a few phone calls." And so, I did.

Three families, who wish to remain anonymous, generously donated the monies and the piano was delivered Christmas Eve morning in time for us to play for both our Christmas Eve services.

What a difference! It looks beautiful and sounds even more beautiful!

The former baby grand, ninety years old—looking and sounding every year of that—has been moved to the choir practice room on the second floor.

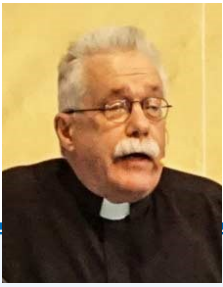
This Christmas—another reason to be grateful!

*Pastor Scott*



**IF YOU WANT TO HEAR THE SERMON, NOW YOU CAN!** We love having children—and lots of them—at worship, and we want parents to be spiritually nurtured by worship, prayer, and preaching. **Our Nursery is up and running each Sunday.** Not only that, the **Nursery is staffed by qualified childcare providers** who supply consistent and competent childcare Sunday after Sunday during Worship. You'll find the Nursery next to the CLC Choir rehearsal room.

**COPIES OF LAST SUNDAY'S SERMON** are available in the Narthex. Take one to a friend, neighbor, or co-worker. It's an easy way to let people know about CLC. Also available at: [CLCmillvale.com](http://CLCmillvale.com) to view and download.



## THE END OF MY BLOOMINGTON TRIPS IS IN SIGHT

In my psychotherapy practice, I have worked with a long-term model of therapy, often with people who have experienced trauma. So, many of my clients have been with me for years. Bringing our therapeutic relationship to a close must be given time and attention.

Toward that end, I will return to Bloomington four times in 2019 and then bring my practice there to a close. I will return the weeks of January 14, February 25, April 1, and May 13. Thank you for your consideration and understanding.

*Pastor Scott*

## WE WELCOME AARON JACKSON ON STAFF (AGAIN)

A few months ago, I called my friend Scott Stevens, Lead Pastor at Northway Community Church. Knowing that each year they employ a couple dozen college-age students as interns, I was hoping to get a line on a part-time person to work with our youth.

Scott told me that finding part-time people to work with youth was just about the hardest task he faced. Youth ministers either want full-time employment or, if you find someone part-time, they are always looking for full-time work and usually leave pretty quickly.

That left me feeling down, given that we cannot offer full-time employment and we don't have a lot of resources with which to work.

Then, I wondered about Aaron Jackson. He already does our social media work. He's just a junior at Point Park University. He's young and cool. And, he's a young adult with a faith life — his father is Pastor of Genesis Church where Aaron remains active.

Well, I met with Aaron and he was immediately enthusiastic. Rather than being interested in teaching teens — which Steve Slepecki and Jade Lane already have covered — Aaron is interested in activities with youth.

And so, in December, the Congregational Council

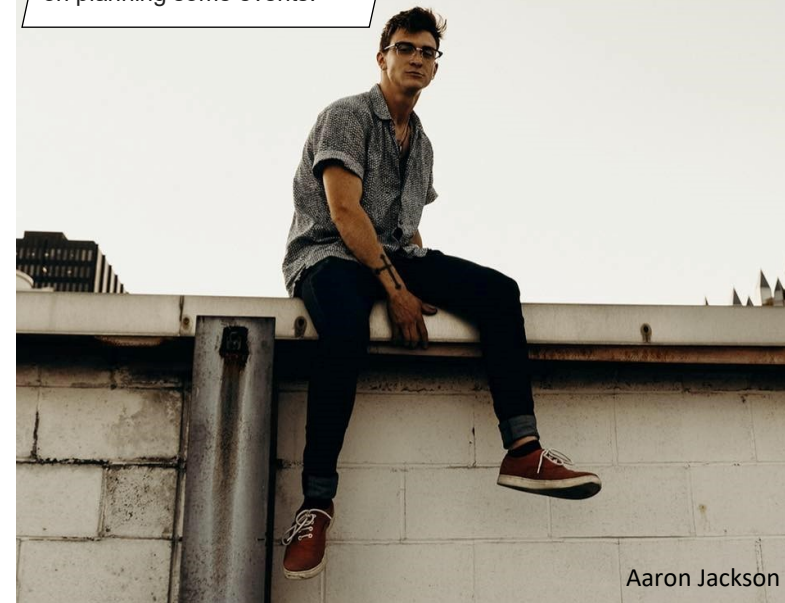
*continued on next page . . .*

The plan is for Aaron to lead one youth event each month along with accompanying the youth to the Lutheran "Sunday Night Live."

Elsewhere in this newsletter, you will read "Traits of Healthy and Growing Congregations." A *staffed congregation* is one of these traits. Pray for CCL as we continue to build a strong staff. And pray for Aaron and our youth ministry.

*Pastor Scott*

The High School Sunday School class will meet January 13<sup>th</sup> and 27<sup>th</sup>. On the 13<sup>th</sup>, our Youth Group leader, Aaron Jackson, will drop by to visit. He is looking for input from the young adults as to what kinds of activities and events they'd like to see planned for the coming year. We encourage them to give it some thought so we can give suggestions that day, and Aaron can work on planning some events.



Aaron Jackson



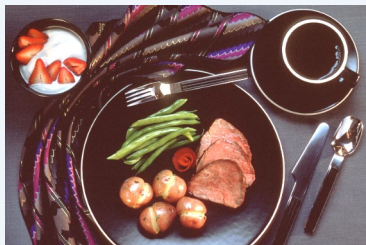
Lord, remember us in your kingdom and teach us to pray:

## THE LORD'S PRAYER

Our Father, who art in heaven, hallowed be thy name, Thy kingdom come, Thy will be done, on earth as it is in heaven.

Give us this day our daily bread; and forgive us our trespasses, as we forgive those who trespass against us; and lead us not into temptation, but deliver us from evil.

For thine is the kingdom, and the power, and the



## **“THE NEIGHBORHOOD TABLE”**

Please join your  
neighbors at **Christ  
Lutheran Church’s  
NEIGHBORHOOD  
TABLE**

for a free meal. This is a  
neighborhood dinner here at  
Christ Lutheran on the first  
Monday of every month.

**Monday,  
January 7 at  
6:00PM**

**WE ARE NEED OF  
DESSERTS** ~ If anyone  
would like to help set up or  
make desserts, please call  
Jaime Renda, 412-523-6927.  
The next Dinner will be on  
Monday, February 4.

## **NEW COUNCIL OFFICERS for 2019**



Tim Wach, President  
Steve Slepecki, Vice President  
Beth Rios, Recording Secretary  
Ray Lardin, Treasurer  
Mandy Freiss, Corresponding  
Secretary

Celebrating their Baptismal Birthdays in January:

|  |   |
|--|---|
| 1 Casey Kruse, Carol Dressel                                   | 17 Judy Benn  |
| 2 Leah Cahoo   | 18 Daniel Weiher,<br>Barbara Schelling                      |
| 3 Jeffrey Bigley   | 19  |
| 4  | 20  |
| 5 Patti Mazza  | 21  |
| 6 Mark Cooper  | 22 Helga Rettig   |
| 7 Timothy Davis  | 23  |
| 8 Brianna Gumto  | 24 Gerald Benn,<br>Karen Timchak,<br>Allen Conroy           |
| 9  | 25 Romana Benn,<br>Nathaniel Hahn                           |
| 10 Pamela Griffith, Jacalyn Worst                              | 26  |
| 11 Jean Thens, Lydia Pullen                                    | 27 Michelle Cahoo<br>Autumn Michalski                       |
| 12 Michelle Benna, Carlie Mileto                               | 28  |
| 13   | 29 Diana Watson,<br>Tim Wach                                |
| 14   | 30 Andrew Satovich,<br>Linda Pfund, Taylor<br>Taylor Kozeak |
| 15 Janice Gosnell, Noelle Hahn<br>Frederick Manners, David Yee |   |
| 16   |   |

### **At The Neighborhood Table**

The Millvale non-profit organization, Emergence: A Women's Collective is happy to offer a free legal clinic. Local attorneys will be available to sit with you and discuss any legal concerns you may have. Free and open to residents of the Triboro EcoDistrict communities of Millvale, Etna, and Sharpsburg. Legal information and limited advice only: no representation will be provided.

## **TRAITS OF HEALTHY AND GROWING CHURCHES**

**THE PREACHING IS STRONG.** It’s clear. It’s biblical. Church members indicate that they learn a lot from the pastor’s preaching.

**THE WORSHIP IS GOD-CENTERED AND VIBRANT.** The styles may differ, but the worship is well done. Excellence is an expectation. Connections between the music and the sermon are clear.

**THEIR SMALL GROUPS DO OUTREACH.** Every healthy church with whom we’ve worked has some type of small group whose focus is reaching unchurched people. They choose their best teachers to lead the groups.

**THEY’VE DEALT WITH CLIQUES AND DIVISIONS.** It’s not that these churches don’t have internal struggles; it’s that they don’t allow early sparks to grow into big fires. They address conflict early on in the process. Cliques and divisions are not allowed to continue.

**THEY HAVE A CLEAR OUTWARD FOCUS.** Their members intentionally know non-believers. They provide evangelism training. Their budget reflects dollars spent to start new ministries and expand services.

**THEY HAVE A RECOGNIZED STRATEGY FOR PRODUCING DISCIPLES.** The church has a membership class. They have a plan to disciple children, teens, and adults. Many of the members believe they’re ready to invest in someone else – and they know and understand the church’s disciple making strategy.

**PRAYER IS A BIG DEAL.** These churches actually pray throughout the week. Small groups teach people ways to deepen their prayer life.

**THEY TEACH MEMBERS ABOUT GIVING.** They don’t assume believers know about budgeting, giving, tithing, etc. Instead, they intentionally build giving training into their overall strategy. Stewardship is thus a significant part of discipleship. (And, by the way, these churches usually give at a higher rate than others).

**THEY HAVE A STRONG CORE GROUP, BUT THEY ALSO EQUIP AND INVITE OTHERS TO SERVE.** Long-term members are still critical to the work of the church, but they open the door for new members to serve as well. These churches genuinely work on setting up the

*continued on next page . . .*



next generation to lead the church into the future.

**THESE CHURCHES ARE STAFF LED AND THE BOARD SUPPORTS THE STAFF’S DECISIONS.** Today’s growing church has to be nimble, flexible, and able to make decisions quickly. The staff are the ones who most readily know what’s going on and are most equipped to make decisions. The Board recognizes this and supports the staff’s decisions.

**GENUINE HEART FOR THE LOST AND THE DESIRE TO EMBRACE THE MESS.** Inward-focused churches are dying churches. Growing churches aren’t just conscious of the lost, they pursue them and are ready to take on the messes of life they may bring.

**CHILDREN’S MINISTRY THAT KIDS DON’T WANT TO LEAVE.** This goes far beyond fun and games, but those are certainly part of it. Imagine kids being in an environment that allows them to understand God’s love for them while being invested in by caring adults who partner with parents to disciple them.

**A CLEAR PATH TO GUIDE GUESTS TO BECOME REGULARS.** Please, please, please don’t ask guests to stand during service. That’s a surefire way to make them not come back. Instead, have an incentivized path to help them get connected to the church

**LAY LEADER DEVELOPMENT AND EMPOWERMENT.** Equip the Saints. Scripture tells us to do it, but what does this really look like? Leadership development is something we know we need to do, but so many of us are at a loss when it comes to practically doing so.

**INTENTIONAL SMALL GROUP STRATEGY.** Real Christ-centered life, together. This is what small groups should be about.

**A CLEAR PATH TO GUIDE REGULARS TO BECOME ALL-IN MEMBERS.** Church membership isn’t simply about agreeing with a church’s beliefs and showing up on Sundays. It’s about contributing in ways of service, generosity and being a part of the vision and mission.

**SHAREABLE CHURCH COMMUNICATION THAT INSPIRES AND INFORMS.** Too many churches do a bad job of communicating past Sunday morning. A church that is healthy and growing communicates constantly in a variety of ways.



# Faith and Family Cafe



Where do adults go to find a safe place to explore matters of family and faith? Where do parents of Sunday School children go at 8:30?

## 10 Sessions ongoing at the Faith and Family Café: BEER, BRATS, AND BAPTISM - a 21<sup>ST</sup> CENTURY LOOK AT THE LUTHERAN APPROACH TO THE CHRISTIAN FAITH

8:30AM every Sunday in the CLC Social Hall

Come early to get a good seat and something to eat and drink! We partner with The Cupcake and Cookie Company to provide breakfast refreshments at a reasonable cost.

*You can sit-in at the Faith and Family Café on any Sunday during Sunday School! Just show up and enjoy Food, Fellowship and Faith.*

**Please note:** We ask that all parents of Sunday School children come to Family and Faith Café instead of remaining in the children’s Sunday School rooms. We appreciate your cooperation.

# BEER, BRATS, AND BAPTISM: A 21<sup>ST</sup> CENTURY LOOK AT THE LUTHERAN APPROACH TO THE CHRISTIAN FAITH

- SESSION 1** ~ Small Group Discussion: What makes CLC a Lutheran Church? Presentation: Lutheran teaching as a lens for our world.
- SESSION 2** ~ Small Group Discussion: What questions do you bring to the table? Presentation: Luther and the 95 Theses/The Birth of the Individual Conscience.
- SESSION 3** ~ Small Group Discussion: What is your religious background? Presentation: Why Lutherans don’t carry Bibles.
- SESSION 4** ~ Small Group Discussion: Who helped form your faith life? Presentation: Justified by grace through faith/The centrality of the Cross.
- SESSION 5** ~ Small Group Discussion: Experiences of Grace. Presentation: Theology of Grace and Theology of Glory.
- SESSION 6** ~ Small Group Discussion: Experiences of Grace. Presentation: The Two Words of God.
- SESSION 7** ~ Small Group Discussion: How do you think about sin? Presentation: Sin/sins/Saint and Sinner Simultaneously.
- SESSION 8** ~ Small Group Discussion: How do you think about Baptism and Communion? Presentation: Worship, liturgy and the Sacraments.
- SESSION 9** ~ Small Group Discussion: How do you think about heaven and hell? Presentation: Predestination/Eternal Life/heaven and hell.
- SESSION 10** ~ Small Group Discussion: What questions remain? What would you like to study in the future? Presentation: Lutheran earthiness/How then do we live?

## Christ continued,

There is something for everyone at Christ Lutheran Church. Your special invitation to visit is on our list below:

- Faith and Family Café, Sundays @ 8:30AM during Sunday School



- Frolic Sunday School Curriculum: Pre-Schoolers 3 to 5
- Sunday School Grades K thru 5
- Nursery and Infant Nursery, Sundays during Worship
- Confirmation Classes for 7th and 8th Graders
- First Communion Class
- High School Sunday School on 2nd and 4th Sundays
- 2 Adult Bible Studies, Sundays @ 10:30AM and 4:00PM

## By Contrast

### Our Church Grows . . .

**First in Spirit** as members act on the presence of the Holy Spirit dwelling within them (Romans 12:4-13) by willingly giving of their gifts to each other, and those beyond our Church. In the Book of Acts, that is how the Church spread Jesus Christ among most of what then was a pagan society.

**Second, in Belief and Faith** (not seen, or perceived to the eyes, but confirmed in the heart) as Jesus tells us “Believe in Me” (John 17:21, 2 Corinthians 5:7). When Martin Luther nailed his 95 Theses to the cathedral door in Wittenberg, belief and faith gave him the courage to do this, for his life became forfeit at that point. *Luther’s witness gave others the courage to admit what many already knew, and deal with it.*

**Third, in Grace** by knowing that but for God’s desire that none should perish (John 17:9, Jeremiah 29:11, John 10:14 and 21:15) as He continues to offer unconditional love by curing us of sin so that we can have eternal life with Him, our prayers can pour out Grace upon all, and everywhere (John 1:16). Jesus tells us to pray, continuously (Luke 18:1). Consider doing this so that talking with God comes as easily as a conversation with a family member, for He first presented the concept of ‘family’ to humanity.

CLC has escaped many of the spiritual ravages of declining Christianity: loss of faith, acceptance of paganism, acceptance of sin, false pride, corruption, lack of discernment, hardness of heart, lukewarm faith, and more (1 Peter 5:2, Revelation 1:11).

*continued on next page . . .*

While the spirit of Christianity continues to glow within CLC, we have the ability in our members to make it shine even brighter outside its walls, giving hope to those in the wider community, some whom have in hardship lost or never known hope, let alone faith, family, health, jobs and the lovingkindness of Christian fellowship, where all good things grow by example and sharing.

## By Contrast . . .

From a friend just returned . . . Christianity in France is currently believed by .06% of its population. Churches (all denominations) that have declined are taken over by the government as historical sites with fees charged to visit, and secular documentation provided on the buildings. (In contrast to the Christian history that built the worship, the architecture, cut the stained glass representations of saints and Scripture, and inspired Biblical sculptures.) Worship services are no longer, and you cannot talk with a Pastor; there are none at these State ‘churches’.

The friend said that one large cathedral had a huge stained glass window the width of our CLC Sanctuary mounted high up; the subject of the window was the Book of Revelation, and yet no one could tell him anything of what it meant. The representations of Christ have no meaning anymore, and the sites have become “whited sepulchres” (Matthew 23:27).

As we at CLC set about our daily Mission in Christ, and the many works that accompany it, give thanks to God that our walls stand for true Christianity that others visiting can recognize through us, and so recognize Jesus.

## Communion to Shut-Ins

Steve Slepecki, our Minister of Visitation, reports that 23 Shut-Ins have been visited and given Communion during the month of December.

Thanks to Steve and Julie Slepecki, Bernadette Thompson and Amy Shaufl for bringing the love of Christ and Congregation to our Shut-Ins.

Our Visitation Ministers also brought Christmas Poinsettias to our Shut-Ins, helping the Hannah Circle in their annual Christmas gifting outreach, as many members no longer drive.

*Thank you for your commitment to this ministry!*



## Thanks

to everyone who donated food to the Food Cupboard at CLC for Christmas. Relief requests are weekly, sometimes daily.

## Thanks to our January Ministry Team

**ACOLYTES** Deja Lane, Evan Visconti, and Emma Charles.

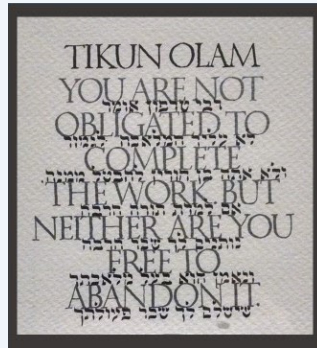
**ALTAR GUILD** Jean Thens, Linda Thens, the Lane Family, Bev and Rick Dreves, and Gail Jameson.

**GREETERS** Danielle and Morgan Visconti, Judy Stennett, Holly Duss, Bernadette Thompson, Jean Thens and Linda Thens.

**ASSISTING our MINISTER** Amy Shaufl, Lennie Jansen, Paul Bell and Jade Lane.

## Thanks to our January Ushers

Tim Wach, Steve Slepecki, Shareen Jordan Mileto, Mandy Freiss, Wendy Murphy, Tina Galioto, Linda Thens and Julie Slepecki.



## "Tikkun Olam"

On the wall of the main entrance to the dining hall at the Capital Retreat Center in Waynesboro, PA, is this saying from Rabbi Tarfon (c. 70 to 135 CE): "You are not obligated to complete the work, but neither are you free to abandon it."

What work, exactly? The Hebrew title above the quotation, "Tikkun Olam," answers that question. The phrase (commonly spelled "Tikkun Olam") is used in contemporary American Judaism to mean the repair of the world.

But Rabbi Tarfon was neither contemporary nor American; this phrase clearly has a larger resonance than our immediate context. The world, after all, is a bigger place than what we can see from our daily commutes.

And the work of repair truly belongs to God, not to us. Scripture declares (Isaiah 61:1-4) that God is about the repair of ruined cities, and that God's people are invited to participate in that work as stewards. In every time and place, God's people comfort the bereaved, put out fires, participate in the political process, raise children, tend the earth, and teach the faith, neither expecting to come to the end of their work, nor believing God would do it if they sat idly by.

*continued on next page . . .*

Here is the truth of the mystery of stewardship, as I see it: people discover meaning and purpose in their lives as they participate in God's healing work in their own time and place. Our joy is not reduced to those few times we get to do the victory dance, and our freedom is seldom gained by walking away from a challenge. But both joy and freedom do result from being engaged in God's work in our time and place, for as long as we draw breath. For that work is truly divine and that work is truly eternal – which is to say, worth it!

With you in Christ,  
+Kurt



Bishop Kurt F. Kusserow

SWPA Synod of the Evangelical Lutheran Church of America, reprinted with permission

## WORSHIP at CLC CHRIST LUTHERAN CHURCH

At 9:30AM each Sunday, we celebrate Christ in Worship. You can visit this [traditional Lutheran Worship](#) each week throughout the year, so come as you are and join us! [Visit us and uplift your soul.](#)



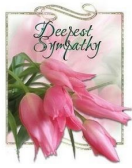
## While I'm Gone . . .

Deb and I return to Bloomington, Illinois, about every four or five weeks to see our long-term clients in psychotherapy. We leave after the 9:30 worship service on Sunday and return the following Friday evening. **Deb and I will be away the week of January 14.**

If you have need of Pastoral care during this time, please contact **Pastor Mike Robinson, St. John's, Perrysville: 412-260-4407.**

## Thanks to our January Offering Count Team

who steadfastly and graciously connect each week to record what members give from their hearts . . . Gary Milliken, Donna Davis, Beth Rios, Linda Thens, Paul and Sandy Bell, Dorie and Frank Budzik, and Recorders Bev & Rick Dreves.



CLC Member  
Donald  
Raymond  
Braun entered  
Eternal Life on  
Thursday,  
December 27th. The  
funeral service was held  
here at CLC on Monday,  
December 31st at 1PM.  
Our sympathies are with  
Don's Family and friends.



#### ARE YOU CONNECTED?

As a supplement to our  
newsletter, you could  
receive reminders and  
special announcements -  
short & sweet! - about  
your church's activities.

We don't share your  
e-mail address. During  
the Lutheran Liturgical  
Year, we have shared e-  
moments for many  
seasons and celebrations,  
but apart from that we  
use it only to keep you  
informed. Just e-mail  
your address to:  
ChristLutheran917@gmail  
.com

## www.CLCmillvale.com

Our NEW CLC Website is up and running with  
mobile access. Thanks to Shareen Jordan,  
visitors will have a user-friendly aesthetically  
pleasing (beautiful) experience. As you take a  
break from the busy-ness of your day or week,  
get your favorite drink (don't spill it on your  
phone or computer) and go to:

[www.CLCmillvale.com](http://www.CLCmillvale.com) to connect with your  
Church.

## LUTHERAN ADULT STUDIES AT CLC . . .

John Curry is teaching a Bible study on the **Gospel of  
Luke at 4:00PM on Sunday afternoon** so you can  
combine the study of Scripture.

Luke's Gospel is the most broad-minded and the most  
forgiving. Every chance he gets, Luke has Jesus forgiving  
people, right up the good thief on the cross. Luke sees  
God as generous, merciful, and inclusive.

Presently, John serves as Vice-President of East Liberty  
Lutheran Church. **The Lutheran Study is ongoing into  
2019.**

Steve Slepecki serves as facilitator for the  
continuation of the study of **Luther's Small Catechism on  
Sundays at 10:30AM.** For nearly five centuries, this  
Catechism has served as the basic instruction book for  
the Lutheran Church. Steve serves as CLC's Minister of  
Visitation to our homebound, and is exploring the path  
toward ordained ministry.

## January Birthdays

|    |  |    |  |
|----|--|----|--|
| 1  | Andrew Satovich<br>Carol Dressel                 | 16 | Nicholas Satovich<br>Emily Cooper                  |
| 2  | Sandra Kaiser                                    | 17 | Aaron Lardin                                       |
| 3  | Adam Lucas<br>Sharon Wach                        | 18 | Jason Hischemellor<br>Jamie Mazza<br>Emily Pfeifer |
| 4  | Violet Pfeifer                                   | 19 | Audrey Stucky                                      |
| 5  |  | 20 | Rebecca West                                       |
| 6  | Mary Lou Ebner                                   | 21 | Michael Watson                                     |
| 7  | Mary Jane Cooper                                 | 22 |  |
| 8  | Lisa Liptak                                      | 23 |  |
| 9  | Vicki Corfield<br>Alysa Gumto<br>John Venturella | 24 | Verla Stoker<br>Doug Blum<br>Linda Collins         |
| 10 |  | 25 |  |
| 11 | Heather Werner                                   | 26 | Terry Heberle<br>Melissa Benna                     |
| 12 | Romana Benn                                      | 27 | Zoey Vida  |
| 13 | Nathaniel Oesterling                             | 28 |  |
| 14 | Joy Smallwood                                    | 29 | Julie Slepecki                                     |
| 15 | Alice Renaldi                                    | 30 | Judy Alberth                                       |
|    |  | 31 | Connor Suchma                                      |

We're connecting  
Your Family with  
our Sunday . . .  
**HIGH SCHOOL  
SUNDAY  
SCHOOL**

**ATTENTION ALL  
TEENS and  
PARENTS of TEENS!**

**Don't forget, we are  
up and running with  
our High School Sunday  
School class!**

**We meet on the 2nd  
and 4th Sundays each  
month. All post-  
Confirmation teens are  
welcome.**

**If you have a High  
School Student who  
would like to attend,  
please email Steve  
Slepecki and let him  
know: [steve91281@  
hotmail.com](mailto:steve91281@hotmail.com). Or just  
flag him down before  
or after church.**

**Thanks!**

Attributions:  
CLC Logo Design by Jason Mileto  
Cover Art, Winter Flat Design 02 at: All-Free-Download.com  
P. 2 Scroll, All-Free-Download.com  
P. 3 Piano Clip Art, All-Free-Download.com  
P. 4 Pastor Scott, private collection  
P. 5 Aaron Jackson, private collection  
P. 5 Lord's Prayer; Jills-Faith-pray-1639946\_\_340-Pixabay  
P. 6 Neighborhood Table, All-Free-Download.com  
P. 5 New Council, 5-01 All-Free-Download.com  
P. 7 Bible Prayer, adult\_bible\_blur\_book\_business\_education\_indoors\_602056, All-Free-Download.com  
P. 8-9 Pastor Scott, private collection  
P. 10 Children, Pexels.com  
P. 11, Pexels.com  
P. 12 Tikun Olam, SWPA Synod ELCA  
P. 13 Lutheran Cross Symbol, ELCA  
P. 13 Worship at CLC, geralt-HolySpirit-pentecost-3409249\_\_340-Pixabay  
P. 14 Sympathy, sympathy-clipart-9a5e3f3fc2816213c75b5aacc4ea1c6d, Clip Art Library  
Insert, Memorial art, Canstock.com

**An Attitude of Gratitude**  
Gratitude is our ability to see the grace of God, morning by morning, no matter what else greets us in the course of the day. Craig Barnes

To the Glory of God,  
and in Memory of  
Our Grandparents by  
Dave & Karen Krenn

MEMORIAL

## January 2019 Calendar at Christ Lutheran Church

|                              |  |
|------------------------------|--|
| Tuesday, January 1           | New Year's Day   |
| Thursday, January 3          | 7PM, Choir Practice  |
| Friday, January 4            | 6PM Girl Scouts #649; 7:30PM NA, Social Hall   |
| Saturday, January 5          | 9AM AA, Library; 7PM NA, Social Hall   |
| <b>Sunday, January 6</b>     | <b>8:30AM Faith and Family Café, Sunday School</b><br><b>9:30AM Traditional Worship</b><br><b>10:30AM &amp; 4PM Adult Bible Study</b><br><b>4PM St. AfterSchool Program</b><br><b>6PM The Neighborhood Table</b><br><b>6:15PM Yoga</b><br><b>Hannah Circle</b> |
| <b>Monday, January 7</b>     | 3:30PM Daisy Troop, Social Hall  |
| <b>Tuesday, January 8</b>    | 7PM, Choir Practice  |
| Wednesday, January 9         | 7:30PM NA, Social Hall   |
| Thursday, January 10         | 9AM AA, Library; 7PM NA, Social Hall   |
| Friday, January 11           | 8:30AM <u>Faith and Family Café, Sunday School</u>   |
| Saturday, January 12         | <u>High School Sunday School</u>   |
| <b>Sunday, January 13</b>    | <b>9:30AM Traditional Worship with Christmas</b><br><b>10:30AM &amp; 4PM Adult Bible Study</b><br><b>4PM St. AfterSchool Program</b><br><b>6:15PM Yoga; 7PM Pain Support</b>   |
| <b>Monday, January 14</b>    | <b>10AM-1PM Food Cupboard</b>  |
| <b>Wednesday, January 16</b> | 7PM, Choir Practice  |
| Thursday, January 17         | 6PM Girl Scouts #649; 7:30PM NA, Social Hall   |
| Friday, January 18           | 9AM AA, Library; 7PM NA, Social Hall   |
| Saturday, January 19         | 8:30AM <u>Faith and Family Café, Sunday School</u>   |
| <b>Sunday, January 20</b>    | <b>9:30AM Traditional Worship</b><br><b>10:30AM &amp; 4PM Adult Bible Study</b><br><b>4PM St. AfterSchool Program</b><br><b>6:15PM Yoga; 7PM Pain Support</b><br><b>10AM Food Cupboard Delivery</b><br><b>5:30PM Daisy Troop, Social Room</b>                  |
| <b>Monday, January 21</b>    | <b>anuary 24 7PM, Choir Practice</b>   |
| Wednesday, January 23        | 7:30PM NA, Library   |
| Thursday, J                  | 9AM AA, Library; 7PM NA, Social Room   |
| Friday, January 25           | 8:30AM <u>Faith and Family Café, Sunday School</u>   |
| Saturday, January 26         | <u>High School Sunday School</u>   |
| <b>Sunday, January 27</b>    | <b>9:30AM Traditional Worship</b><br><b>10:30AM &amp; 4PM Adult Bible Study</b><br><b>4PM St. AfterSchool Program</b><br><b>6:15PM Yoga; 7PM Pain Support</b>  |
| <b>Monday, January 28</b>    | <b>7PM, Choir Practice</b><br><b>7:30PM NA, Library</b><br><b>9AM AA, Library; 7PM NA, Social Room</b>   |
| Thursday, January 31         |  |
| Friday, February 1           |  |
| Saturday, February 2         |  |

Thanks to Sherrie Lane for her dedication in keeping the Calendar!!

Insert

|  |  |
|--|--|
| <b>Office Hours</b>  | <b>412-821-4300</b>  |
| <b>Monday – Friday</b>   | <b>9:00am – 2:00pm</b>   |
| <b>Church Website</b>  | <b>www.CLCmillvale.com</b>   |
| <b>Church Facebook</b>   | <b>Christ Lutheran Church Millvale</b>   |
| <b>Office Email</b>  | <b>ChristLutheran917@gmail.com</b>   |
| <b>EVERY SUNDAY:</b>   |  |
| <b>Worship Services</b>  |  |
| <b>Sunday Traditional Worship</b>  | <b>9:30AM</b>  |
| <b>Sunday School</b>   | <b>8:30am Pre-K through High School</b><br><b>High School meets on 2nd &amp; 4th</b><br><b>Sundays</b>       |
| <b>Faith and Family Café Open</b><br><b>Nursery and Infant Nursery</b><br><b>Adult Bible Study</b> | <b>8:30am During Sunday School</b><br><b>Open During Sunday School</b><br><b>Sundays: 10:30am and 4:00pm</b> |
| <b>Community Services</b>  | <b>St. AfterSchool - 4-6PM Mondays</b><br><b>Food Cupboard, 3rd Wed. , 10-1</b>                              |
| <b>N. A. Meeting</b>   | <b>Fridays @ 7:30pm</b><br><b>Saturdays @ 7:00pm</b>   |
| <b>A. A. Meeting</b><br><b>Yoga</b>  | <b>Saturdays @ 9:00am</b><br><b>Mondays @ 6:15pm</b>   |

### CLC “Saint AfterSchool” is

every Monday when school is in-session, from 4-6PM at CLC, with Homework Help, Crafts, Games, Recreation, and a Meal; cost per child is 50c per week. It is open to K thru 3rd Grades in Millvale, Reserve and Shaler Area schools. Call your school for a registration form, or CLC 412-821-4300, or see Sherrie Lane.

Inviting your friends, neighbors, and acquaintances to worship with us is a wonderful way to introduce people to CLC. In our world, people are hungering for a word of hope, a community of caring people, and a place to grow spiritually and relationally. You can be the friendly face that invites someone to find their way to their spiritual home.

Insert



917 Evergreen Avenue  
Millvale, PA 15209

412-821-4300 ~  
www.clcmillvale.com ~  
christlutheran917@gmail.com

The Reverend Scott Olbert  
Pastor  
The Reverend Thomas R. Stennett  
Pastor Emeritus  
Steve Slepecki  
Minister of Visitation  
Ed Kapsha  
Director of Music and Liturgy  
Pat Bauer  
Children's Choir Director  
Aaron Jackson  
Creative Director and Minister  
for Youth  
Maureen Herbster  
Pastoral Liaison  
Rheba Salac  
Administrative Assistant  
Sherrie Lane and  
Michelle Hilliard  
Sextons

To the Glory of God,  
and in Memory of  
Al Zimmerman by  
his wife Edith.

MEMORIAL